



Belarus Production and Trade Concern of the timber, woodworking and pulp and paper industry "BELLESBUMPROM"  
RUE "Zavodgazetnoybumagi"  
Shklov, st. 1st Factory, 9  
tel./fax +3752239-71-843, mob. +37529- 352-25-20  
www.domostroenie.by

## COMMERCIAL OFFER OF THE BRANCH «DOMOSTROENIE»

Our modern enterprise, founded on basis of RUE «Zavodgazetnoybumagi» on 23<sup>rd</sup> of January 2009, using the newest technologies and equipment of leading European producers, such as «Homag», «Cathild», «Ledinek», «Hundegger» for production of molded products, glued laminated beam, frame-panel houses and glued laminated beam houses, pellets, responding to requirements and expectations of consumers, offers you cooperation:

### OUR PRODUCTION



#### 1. Frame-panel houses [HTS codes 4418908000]

(GOST 1074-97STB 1722-2007, TU BY 790282162.001-2010): capacity of series production – 2000 square meters per month. Full set of the house includes all that is necessary for its montage: set of mounted walls and overlaps, window and door blocks, interior and exterior sheathing, floor board, rafter system, full set of hardware. Usage of modern heat-insulation materials allows to provide resistance of enclosing constructions not less than 6,11 m<sup>2</sup> °C/W.

#### 2. Glued laminated beam houses [HTS codes 4418901000]

(TU BY 790282162.004-2010, EN 14080): capacity of series production – 5-8 sets of glued laminated beam houses per month. While gluing of softwood lamellas, our enterprise uses certified glue AKZONOBEL, which got an approval of Norwegian, French and German institutes for production of bearing wooden constructions.

#### 3. Glued laminated beam [HTS codes 4418901000]

– selective timber of softwood, which is being cut, treated in drying cameras with soft regimes to relative humidity from 8 to 12%. Dried commodity is being planed from 4 sides to get precise sizes, sorted and glued on powerful hydraulic press to glued laminated beam of different sections.

- ✓ Capacity of series production per year – 15 000 M<sup>3</sup> multilayered glued beam;
- ✓ Planed beam [50\*600\*75-200 (h) mm; 50\*350\*200-300 (h) mm; 50-300\*200-600 (h) mm];
- ✓ Profiled beam [80-300\*100-250(h) mm];
- ✓ Maximum length of beam – 18 m.

#### ✓ Price of glued laminated beam:

Name	Unit of measurement	Price in € (without VAT)
Single layer beam 50*190/45*150/45*100	M <sup>3</sup>	360
Squared beam	M <sup>3</sup>	420
Profiled beam	M <sup>3</sup>	440
Wall beam	M <sup>3</sup>	460

\*Price is formed on FCA conditions

### **SALE AND DELIVERY CONDITIONS**

- frame-panel houses and glued laminated beam houses: delivery conditions – FCA; terms of payment – full prepayment, partial prepayment; price of frame-panel houses is formed depending on price of spent materials, glued laminated beam houses – depending on quantity of beam cubes, used for production.
- glued laminated beam: packaging – packets in the film; delivery conditions – FCA; payment conditions – full prepayment.

### **COOPERATION EXPERIENCE**

RUE «Zavod gazetnoy bumagi» branch «Domostroenie» cooperates with different companies near and far abroad. We have experience of work with such countries as Russia, Italy, Latvia, Azerbaijan, France and etc.

**We would be glad to cooperate with you!**

#### **Contacts of sales department:**

Tel./fax: + 375-2239-71-843

Tel.: + 375-29-352-25-20

E-mail: [ptozyb@domostroenie.by](mailto:ptozyb@domostroenie.by)

[www.domostroenie.by](http://www.domostroenie.by)

We offer houses project:

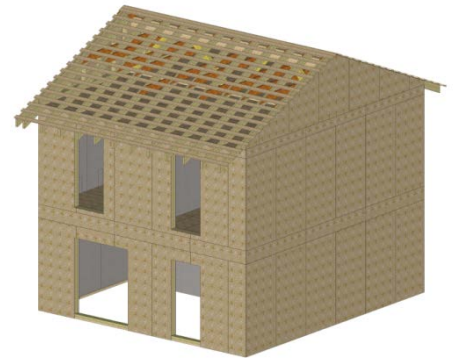
**1 Frame-panelhouse“VERNY SECOND”**



**Price FCA: 19 345 EUR (without VAT)**

**Area –92,31m<sup>2</sup>.**

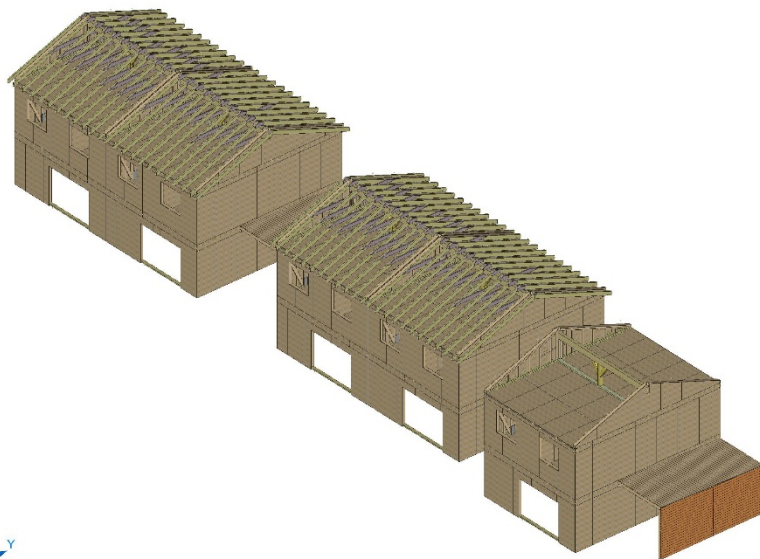
**Homekit** :set of panels panels for walls, overlaps, frontons, additional elements (truss system, heat-insulating slab of slagwool , OSB, waterproofing of the roof and walls, vapor barrier film, gypsum board), set of metalware for the assembly of wall panels, partitions.







**Frame-panelhouse VILLERUPT (8,3x6,3)**



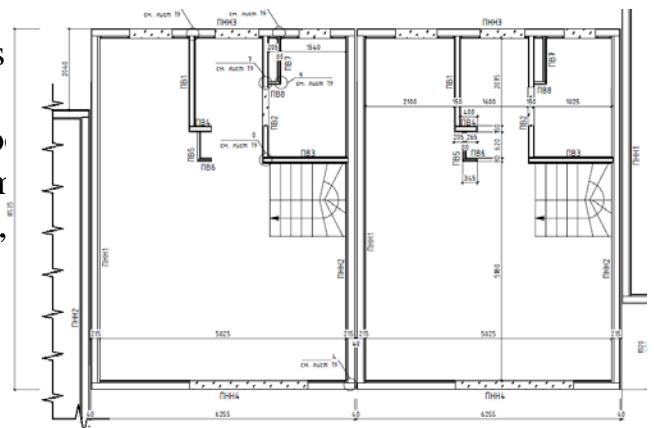
**(without VAT)**



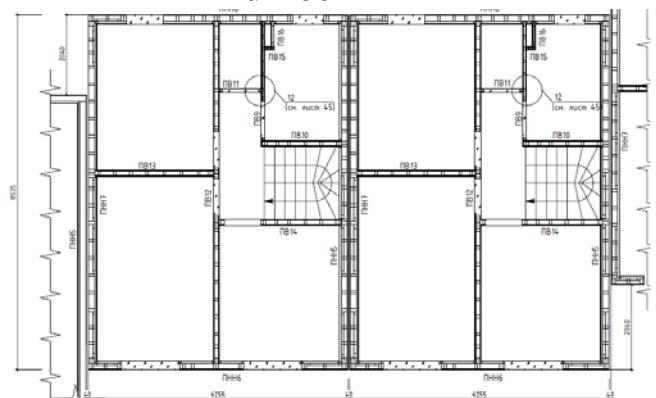
**Homekit:** set of panels panels for walls, overlaps frontons, additional elements (truss system, heat-insulating slab of slagwool , OSB, waterpro of the roof and walls, vapor barrier film, gypsun set of metalware for the assembly of wall panels, partitions.



**1st floor**



**2nd floor**



**Contacts of sales department:**




Tel./fax: + 375-2239-71-843

Tel.: + 375-29-352-25-20

E-mail: [ptozyb@domostroenie.by](mailto:ptozyb@domostroenie.by)

## PRICE-LIST

№	Name of the project	Total area, m <sup>2</sup>	Price without VAT, EUR (FCA)	Homekit	General view
1	Frame-panelhouse "ALEXANDRIA" (11,85x9,8)	90,20	32 000	set of panels , truss system, outer sheathing block-house, trim, floor board-27, wood casement windows, wooden interior doors <i>Square-edged plank of sort 1-3</i>	
2	Frame-panelhouse "RADUGA" (11,5x9,35)	171,76	34 500	set of panels, truss system, a set of nails floor boards-27 drywall, wall paneling, wind farm board <i>Square-edged plank of sort 1-3</i>	
3	Glued laminated beam house «ALEXANDR» (9,8x6,75)	113,00	29 900	Timber wall 140mm*210mm, rafter, trimmer joists, beams, planed board, timber of the siege (sort B), waling, rack <i>Square-edged plank of sort 1-3</i>	
4	Glued laminated beam house «ALESYA» (8,0x6,0)	48,50	22 000	Timber wall 140mm*210mm, rafter, trimmer joists, beams 190*50, planed board, timber of the siege (sort B), waling, rack <i>Square-edged plank of sort 1-3</i>	
5	Glued laminated beam house «BEREZINO» (12,0x9,2)	194,00	46 300	Timber wall , timber wall (interior) 140mm*140mm, rafter, trimmer joists, beams, planed board, timber of the siege(sort B), waling, rack <i>Square-edged plank of sort 1-3</i>	
6	Glued laminated beam house «VIKING» (9,0x7,8)	62,83	18 800	Timber wall 140mm*210mm, rafter, trimmer joists, beams, planed board, timber of the siege (sort B), waling, rack <i>Square-edged plank of sort 1-3</i>	
7	Glued laminated beam house «LIDA» (13,0x11,0)	140,00	44 800	Timber wall 140*210 , timber wall (interior) 140mm*110mm, rafter, trimmer joists, beams, planed board, timber of the siege(sort B), waling, rack <i>Square-edged plank of sort 1-3</i>	

8	<b>Glued laminated beam house «MARA» (11,3x7,3)</b>	133,5	29 400	Timber wall , timber wall (interior) 140mm*140mm, rafter, trimmer joists, beams, planed board, timber of the siege (sort B), waling, rack <i>Square-edged plank of sort 1-3</i>	
9	<b>Glued laminated beam house «SOKOL» (8,0x6,0)</b>	47,5	18 280	Timber wall 140mm*80mm, rafter, trimmer joists, beams, planed board, timber of the siege(sort B), waling, rack <i>Square-edged plank of sort 1-3</i>	
10	<b>Glued laminated beam house «SVETLANA» (13.7x12.5)</b>	159,99	60 800	Timber wall 140 * 210 mm, timber wall 129 * 210 mm, timber wall 59 * 210, rafter, trimmer joists, beams 50 * 210 mm, planed board 150 * 45mm, 210 * 40 mm, timber of the siege 210 * 80 mm, waling 60 * 100mm, rack 200 * 200 mm <i>Square-edged plank of sort 1-3</i>	
<b>****The foundation and construction works in the cost of these projects is not included.</b>					

**Contacts of sales department:**

Tel/fax: + 375-2239-71 843

Tel.: + 375-29-352-25-20

E-mail: ptozgb@domostroenie.by

[www.domostroenie.by](http://www.domostroenie.by)




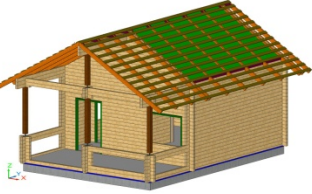
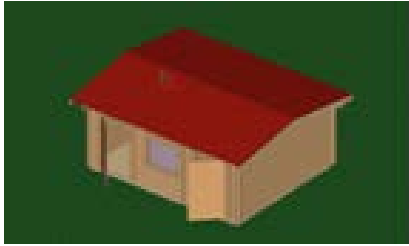


**SUMMER HAUSE**

№	Name of the project	Totalarea, m2	Price without VAT, EUR (FCA)	Generalview
1	<b>МАФ-1.12 (2500*3000)</b>	<b>7,5</b>	<b>620</b>	
2	<b>МАФ-2.12 (4000*5000)</b>	<b>20</b>	<b>1 530</b>	
3	<b>МАФ-5.12 (4000*8500)</b>	<b>34</b>	<b>1 900</b>	
4	<b>МАФ-6.12 (4000*8500)</b>	<b>34</b>	<b>2 470</b>	
5	<b>МАФ-7.12 (3000*4000)</b>	<b>12</b>	<b>870</b>	
5	<b>МАФ-8.12 (6000*3000)</b>	<b>18</b>	<b>1 290</b>	

**\*\*\*The foundation and construction works in the cost of these projects is not included.**



**GARDEN HOUSE**

№	Name of the project	Total area, m <sup>2</sup>	Price without VAT, EUR (FCA)	General view
1	Glued laminated beam house«Alesya»	22,9	4 100	
2	Glued laminated beam house«DD-Briz-80»	39	5 360	
3	Glued laminated beam house«Katerina»	16,6	1 620	
4	Glued laminated beam house«Polina»	14,7	1 160	
5	Glued laminated beam house«LD-Elena-1-01»	10,41	990	
<b>***The foundation and construction works in the cost of these projects is not included.</b>				

**Contacts of sales department:**

Tel./fax: + 375-2239-71 843

Tel.: + 375-29-352-25-20

E-mail: [ptozgb@domostroenie.by](mailto:ptozgb@domostroenie.by)[www.domostroenie.by](http://www.domostroenie.by)